

CF-6000 Display Device Calibration System



The Industry's First Affordable All Display Calibration System

"Sensitive and Accurate Enough to Calibrate Directly off a Front Projection Screen."

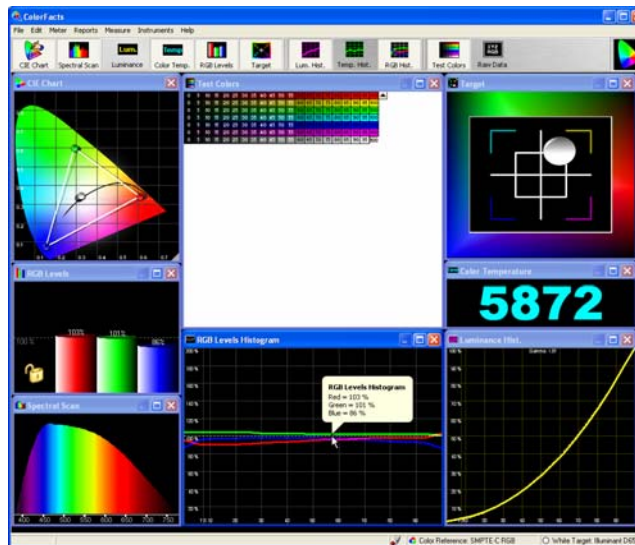
The Milori ColorFacts CF-6000 is a fast, accurate, easy-to-use Calibration and Display Device Analysis System that is the recognized leader in its class. The ColorFacts system hides the complexity and mathematics of color science behind an easy to understand interface helping to decrease time spent getting to the goal of the calibration: accurate video.

The bundled Eye-One Spectroradiometer ensures that the ColorFacts CF-6000 produces praiseworthy results from existing, emerging and future display technologies.



What can you do with ColorFacts?

- Calibrate the display to the entire video chain...from DVD to the screen
- Reproduce the vision of a film director by using the same standards
- Increase realism by extending highlight and shadow detail
- Remove the Blue push present in many displays from the factory
- Enhance apparent depth of image by maximizing contrast
- Improve 'Dark Surround' viewing when the display is viewed in no or little ambient light
- Accurately set the entire gray scale
- Integrate with Avia, Video Essentials and/or computer-generated test images



Display characteristics are presented quickly and clearly.

Milori, Inc.

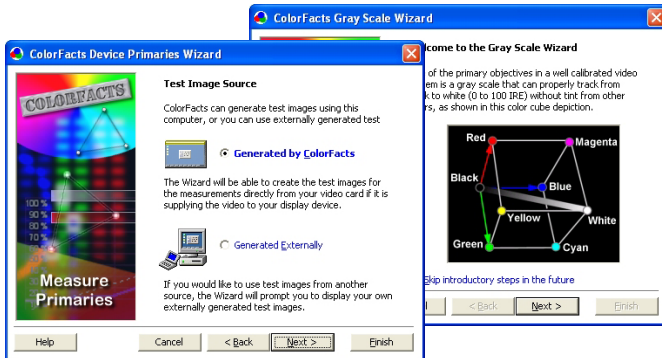
8412 Falls of Neuse Rd Ste 204
Raleigh, NC 27615
Phone: 877-445-5241 or
919-518-8407

www.milori.com
www.colorfacts.com

"I recently upgraded to the ColorFacts system and am thrilled with how accurate and informative it is! I can't say enough good things about it."

Chad Billheimer ISF Calibrator

CF-6000 Technical Specifications



Software Features:

- Seven Easy-to-use Wizards
- Interfaces to dozens of calibration devices
- Summary and Detailed reports
- Internal or External Test Image Generation
- All Data and Graphics Can be Saved to Files
- Hardware *and* Software Upgradeable
- Software Downloadable for Evaluation
- Highly Graphical and easy to use
- LiveUpdate Automates Software Upgrades

Functionality

- Analyzes Analog and Digital Front Projectors
- Analyzes Analog and Digital Rear Projection Sets
- Analyzes Direct View Sets
- Automates Grayscale Characterization
- Automates Contrast Measurement
- Automates Gamma Calculation
- Automates Brightness Uniformity Measurement
- Allows Real-Time Analysis and Calibration
- Displays Yxy, XYZ, LCh, RGB, Lab and Luv Color Spaces
- Displays Color Temperature in Kelvin
- Displays R,G,B Calibration Corrections
- Displays Bulls-Eye Target
- Allows Calibration Target Selection (A, B, C, D50, D55, D65, D75, E, 9300 K, Custom)

System Requirements:

- Pentium class CPU, 400 MHz. + 64 MB RAM
- One free USB port for sensor
- 800x600 resolution recommended
- 24 or 32 bit color

Hardware Specifications:

Spectral analyzer:	Holographic diffraction grating with diode array
Spectral range:	380 - 730 nm
Optical bandwidth:	10 nm
Sampling interval:	3.5 nm (100 bands)
Spectral reporting:	10 nm
Analog/digital converter:	16 bit
Interface:	USB
Physical dimensions:	Length 151 mm, width 66 mm, height 67 mm (6 x 2.6 x 2.6 inches)
Weight:	185 g (6.5 oz)
Accessories included:	Calibration plate, USB cable, mount direct holder, tripod mount
Emission:	
Emission spectra:	Spectral radiometric emission measurement of the luminance
Measurement aperture:	4.5 mm
Measurement range:	0.2...300 cd/m ²
Short-term repeatability:	x, y: ±0.002 typical
Measurement time — emission:	1 second

Power and environmental conditions:

Power required:	Powered by USB, no additional charger required
Operating temperature:	10°C to 35°C (50°F to 95°F)
Storage temperature:	-10°C to 50°C (14°F to 122°F)
Humidity:	0 - 80% non-condensing

Visit Milori Inc. on the web at:

www.milori.com or www.colorfacts.com

Phone: 877-445-5241 or 919-518-8407

Fax: 877-445-5241

Email: info@milori.com